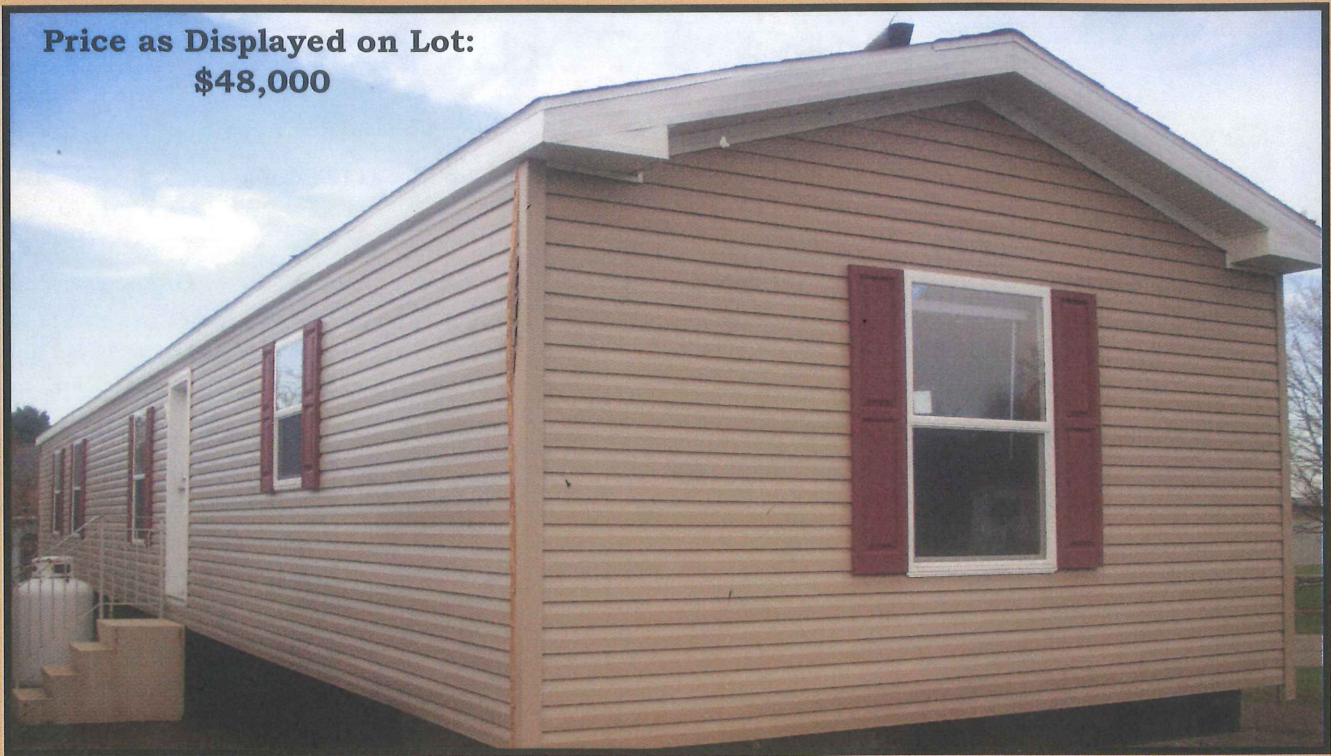


# Commodore Astro Single Series

Price as Displayed on Lot:  
\$48,000



**1,153 Square Feet**  
**16x76**  
**3 Bedroom / 2 Bath**  
**Model 1A119-A**



## Display Model Options:

Recessed Frame	\$95	Dishwasher Installed	\$375
Gas Furnace #M1-MB077ABW	\$175	Wire and Plumb for Washer	\$50
40 Gal. Electric Hot Water Heater w/Pan	\$75	Wire and Vent for Electric Dryer	\$65
Furnace Stack Extension	\$25	Vinyl Flooring Replacing Carpet in 2nd Bath	\$110
Perimeter Heat	\$225	Vinyl Entry Foyer	\$60
1-Extra Exterior Faucet	\$45	Wire Shelf for Laundry Area	\$30
Water Shut-Off Valve Throughout	\$75	Medicine Cabinet MO103A	\$70
9-Lite Rear Cottage Door without Storm	\$275	Garden Tub Master Bath	\$275
2-Extra Vinyl Windows No Grids	\$450	Tub 60" Fiberglass	\$160
1-Window Change Size	\$75	2-China Sinks	\$100
30# Roof Load 16" Centers	\$295	Cabinet over Refrigerator	\$50
Brushed Nickel Nook Light	\$35	Cabinet Doors Raised Panel Café Oak	\$470
3-Bedroom Ceiling Lights	\$165	Interior 6 Panel Door with Return Grill	\$125
1-Telephone Jack	\$35	Molding Under Cabinets	\$50
2-TV Jacks	\$70	Deluxe Interior Package	\$275
1-Carbon Monoxide Detector	\$60	Café Interior Package	\$125

**Options Total: \$4,565**

**Base Price**

**\$43,435**

# Commodore Astro Single Series

## Standard Features:

13'4" Floor Width-14 Wide Models

15'2" Floor Width-16 Wide Models

Stipple Ceilings

Vaulted Ceilings Throughout

Vinyl Insulated Windows

34 x 76 House-Type Front Door with Storm

34 x 76 9-Lite Cottage Outswing Rear Door

Vinyl Dutch Lap Exterior with Sheathing Board

12" Raised Panel Shutters on Front and Door Side

Shingled Roof with Fixed Eaves, Vented Soffits, and Ridge Vent

2 x 6 Exterior Walls on 16" Centers

Transverse Floor System on 24" Centers:

2 x 6 on 14 Wide Models

2 x 8 on 16 Wide Models

30# Roof Load

Detachable Hitches

Brake all Axles-16 Wide Models

Residential Switches and Receptacles

Insulation (R-14-R-19 Avg. R-28)

Smoke Detectors with Battery Back-Up

30" Gas Range with Power Hood

18 Cubic Foot No-Frost Refrigerator

Georgetown Oak Cabinetry

30" Height Kitchen Overhead Cabinets

Lined Overhead Kitchen Cabinets

Base and Center Shelves in Kitchen Base Cabinets

Raised Panel Picture Frame Cabinet Doors with Brushed Nickel Hardware

Laminate Self-Edge Countertops

Stainless Steel Kitchen Sink-33 x 19 x 7

Hi-Rise Kitchen Faucet

Empire Brushed Nickel Faucets Throughout

Switched Receptacles in all Bedrooms

One-GFI Protected Exterior Receptacles

100 AMP Electrical Service

30 Gallon Hot Water Heater

Gas Furnace with Air Exchanger

Air Conditioning Thermostat with 5 Wires

Aluminum Heat Ducts

Main Water Line Shut-Off Valve

Corner Tub in Glamour Bath

One Piece Fiberglass Shower with Glass Door in Glamour Bath

60" Tub/Shower Combinations

1.6 Gallon Per Flush Toilets

33" High Bath Vanities

Calaber Carpet with Rebond Pad

Congoleum Diamond Floor Vinyl Flooring Per Model

White Aluminum Coach Light at Front Door

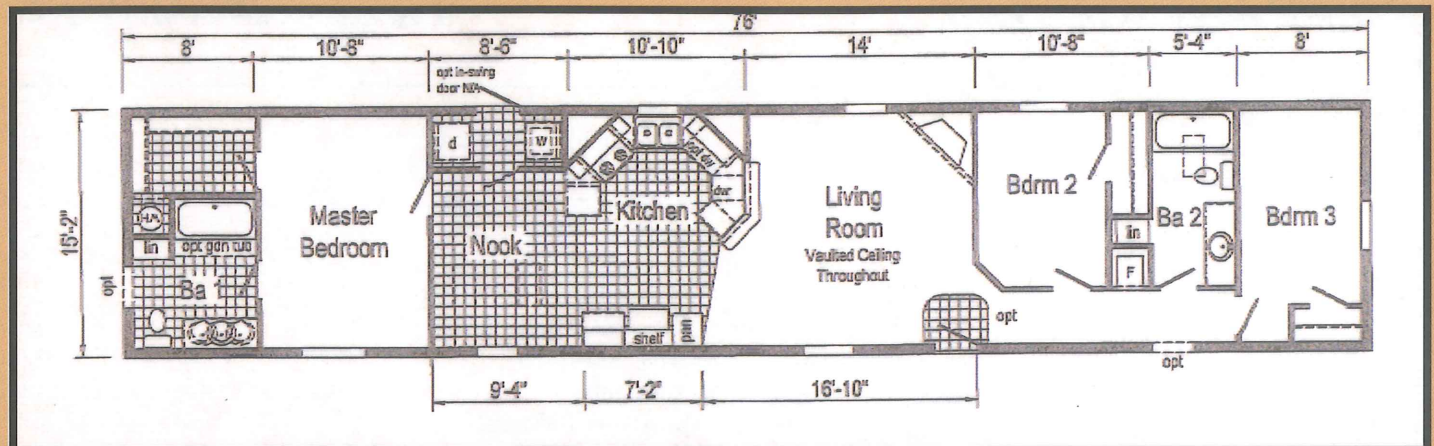
Metal Interior Passage Sets

Vinyl Wall Covering on Gypsum

Pre-Hung Door Jambs with Pinned Non-Mortise Hinges

Wire Shelving in Wardrobes and Guest Closet

Lighted Exhaust Fan in all Bathroom



Available Only At

**OWL**  
**HOMES OF FREDONIA**  
3752 EAST MAIN ROAD • P.O. BOX 127 • FREDONIA, NY 14063  
(716) 673-1366 • FAX (716) 672-5615