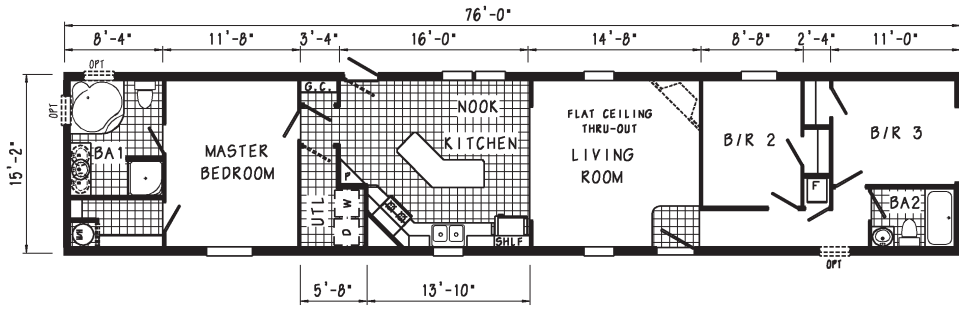
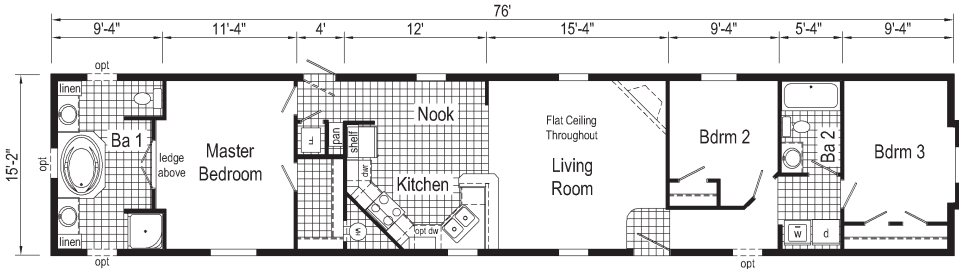


OPT CORNER SHOWER

**ST539A 1676**  
APPROX. 1153 SQ. FT.



**ST544A 1676**  
APPROX. 1153 SQ. FT.



**PROVIDENCE** SINGLE SECTION HOMES - STANDARD FEATURES  
10 YEAR LIMITED STRUCTURAL WARRANTY

**INTERIOR**

FLAT CEILING THROUGHOUT  
STIPPLE CEILING  
8'0" SIDEWALL HEIGHT  
TEXTURED CARPET  
REBOND CARPET PAD  
TACKSTRIP CARPET INSTALLATION  
FOYER ENTRY WITH VINYL FLOORING  
NO-WAX VINYL FLOOR COVERINGS BY CONGOLEUM  
VINYL WALL COVERINGS ON GYPSUM  
SCAVO DINETTE LIGHT  
GLASS LIGHT SHADES THROUGHOUT  
PRE-HUNG DOOR JAMBS  
PINNED NON-MORTISE HINGES  
METAL INTERIOR PASSAGE SETS  
FLOOR MOUNT DOOR STOPS  
SMOKE DETECTORS WITH BATTERY BACK-UP  
WIRE SHELVING IN GUEST CLOSET  
DESIGNER-COORDINATED WINDOW TREATMENTS

**KITCHEN**

CLASSIC CRAFT CABINETRY (KCMA APPROVED)  
HARDWOOD FLAT PANEL CABINET DOORS  
UPGRADE CABINET HARDWARE  
CONCEALED CABINET HINGES  
30" LINED OVERHEAD CABINETS  
ADJUSTABLE SHELVES IN OVERHEAD CABINETS  
DELUXE ROLLER GUIDE DRAWER SYSTEM  
ADJUSTABLE CENTER SHELF IN BASE CABINETS  
25" HIGH-PRESSURE LAMINATE COUNTERTOPS  
WITH LAMINATE EDGING  
4" LAMINATE BACKSPLASH  
NO-WAX VINYL FLOOR COVERINGS BY CONGOLEUM  
DECORATIVE VINYL WALL COVERINGS  
STAINLESS STEEL SINK - 33X19X7  
EMPIRE BRUSHED NICKEL FAUCET

**APPLIANCES**

30" GAS RANGE  
POWER RANGE HOOD WITH LIGHT  
18 CUBIC FOOT, NO-FROST REFRIGERATOR

**BATHS**

DECORATIVE VINYL WALL COVERINGS  
60" ONE-PIECE FIBERGLASS TUB/SHOWERS ONE-PIECE  
FIBERGLASS SHOWER WITH GLASS DOOR IN GLAMOUR  
BATHS FIBERGLASS  
CORNER TUB IN GLAMOUR BATHS  
DELUXE OVERDRAPE AT 60" TUBS  
1.6 GALLON PER FLUSH ELONGATED TOILETS  
VITREOUS CHINA STOOL, TANK AND LID  
VITREOUS CHINA SINK WITH OVERFLOWS AND  
POP-UP DRAINS  
HIGH-PRESSURE LAMINATE COUNTERTOPS  
WITH LAMINATE EDGING  
4" LAMINATE BACKSPLASH  
LIGHTED VENT FAN IN EACH BATH  
HARDWOOD FLAT PANEL CABINET DOORS  
UPGRADE CABINET HARDWARE  
CONCEALED CABINET HINGES  
BASE SHELF IN VANITIES  
33" HIGH BATH VANITIES  
EMPIRE BRUSHED NICKEL FAUCETS

**BEDROOMS**

CEILING LIGHTS  
VINYL WALL COVERINGS  
EGRESS WINDOW EACH BEDROOM  
WIRE SHELVING IN WARDROBES  
PANEL-MATCHED CLOSET LINERS  
SWITCHED LIGHT IN ALL WALK-IN CLOSETS

**UTILITIES**

WASHER AND DRYER AREA  
100 AMP ELECTRICAL SERVICE  
PLUMB AND WIRE FOR WASHER  
WIRE AND VENT FOR DRYER  
30 GALLON ELECTRIC WATER HEATER WITH PAN  
AUTO IGNITION GAS FURNACE  
#M1-MB077ABW  
**UTILITIES (CONT.)**  
LOUVERED FURNACE DOOR  
AIR EXCHANGER SYSTEM FOR FURNACE

ALUMINUM HEAT DUCTS  
COPPER WIRING THROUGHOUT  
MAIN WATER LINE SHUT-OFF VALVE  
PROGRAMMABLE THERMOSTAT  
ONE EXTERIOR WATER FAUCET

**INSULATION**

R-22 FIBERGLASS INSULATION IN FLOOR  
R-19 FIBERGLASS INSULATION IN WALLS  
R-25 AVG. BLOWN INSULATION IN CEILING

**EXTERIOR**

BRUSHED NICKEL LANTERN LIGHT WITH SEEDED  
GLASS AT FRONT DOOR  
RUSHED NICKEL SQUARE LANTERN LIGHT AT  
REAR DOOR  
ONE GFI-PROTECTED EXTERIOR RECEPTACLE  
VINYL DUTCH LAP SIDING  
SHEATHING BOARD UNDER SIDING  
SHINGLE ROOF  
RIDGEVENT ROOF VENTILATION SYSTEM  
38X82 STEEL 9-PANEL FRONT DOOR WITH A  
DEADBOLT LOCK  
34X76 9-LITE COTTAGE OUTSWING REAR DOOR  
VINYL INSULATED WINDOWS WITH GRIDS AND  
LOW-E GLASS  
12" RAISED PANEL SHUTTERS ON FRONT DOOR  
SIDE

**CONSTRUCTION**

ENERGY STAR CERTIFIED ON SELECTED MODELS  
TRANSVERSE FLOOR SYSTEM:  
2X6 ON 14 WIDE MODELS  
2X8 ON 16 WIDE MODELS  
2X6 EXTERIOR WALLS ON 16" CENTERS  
20# ROOF LOAD



**Commodore Homes of Pennsylvania**

P.O. BOX 349 - CLARION PA 16214 - (814) 226-9210

info\_pa@commodorehomes.com

**www.commodore-pa.com**



ENERGY STAR  
FOR HOMES  
LEADERSHIP IN  
HOUSING AWARD  
WINNER 2010

Location and Quantity of Skylights  
Available May Vary Per Floor Plan in  
Accordance with Energy Requirements.

Your Independent Retailer Is:

Your purchase contract including options is with your retailer who is an independent contractor, not our agent, and is responsible totally for any alterations, exchanges, additions or attachments made in or to your home.

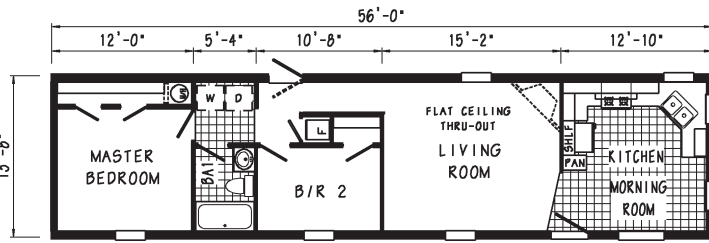


MODEL ST544A  
KITCHEN  
SEE PAGE 5

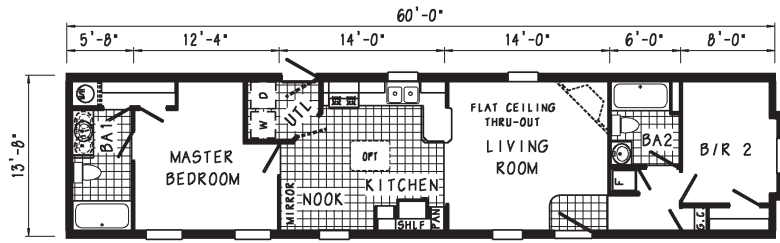
**PROVIDENCE**  
SINGLE SECTION HOMES



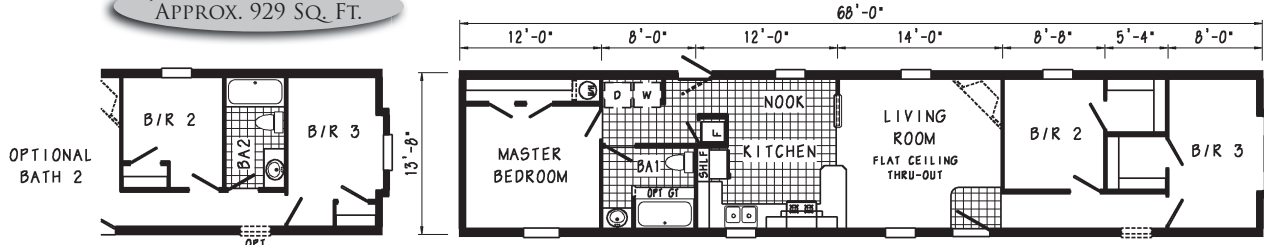
**JB502A 1456**  
APPROX. 765 SQ. FT.



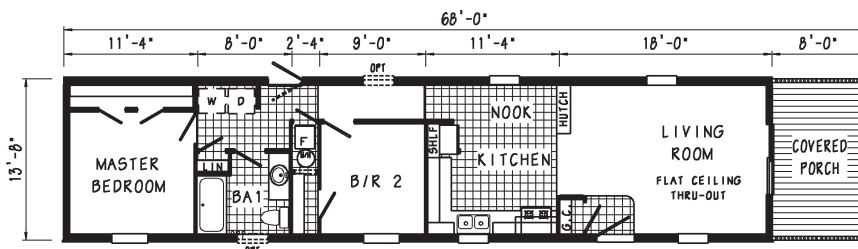
**JB503A 1460**  
APPROX. 820 SQ. FT.



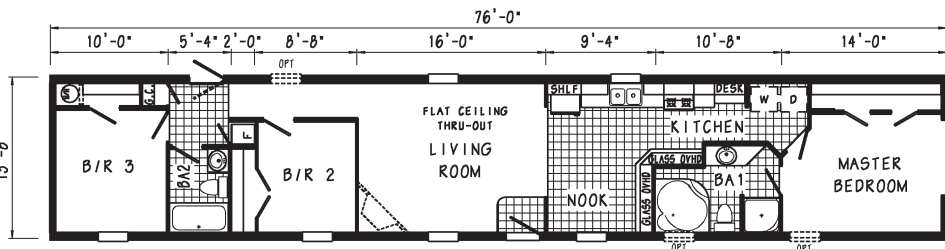
**JB509A 1468**  
APPROX. 929 SQ. FT.



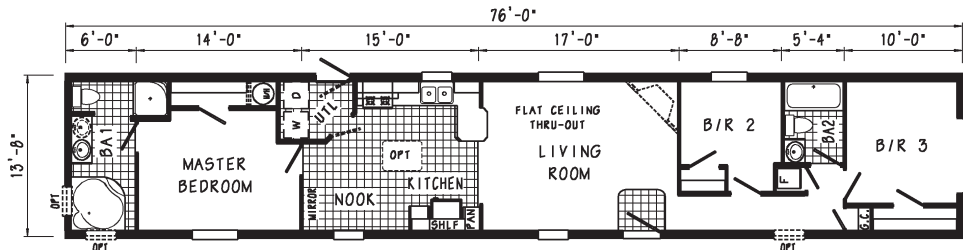
**JB537A 1468**  
APPROX. 820 SQ. FT.



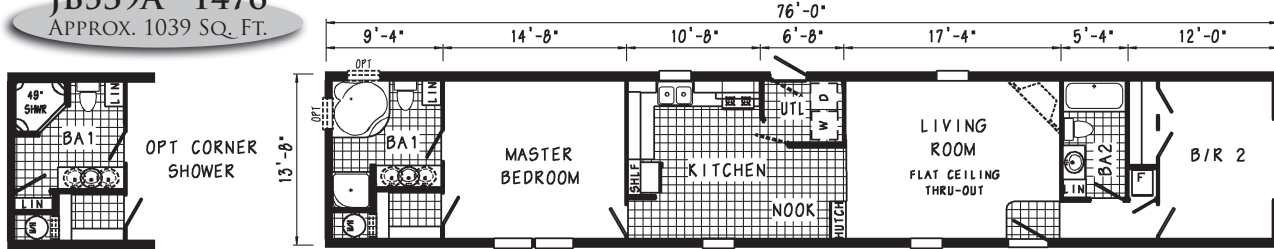
**JB514A 1476**  
APPROX. 1039 SQ. FT.



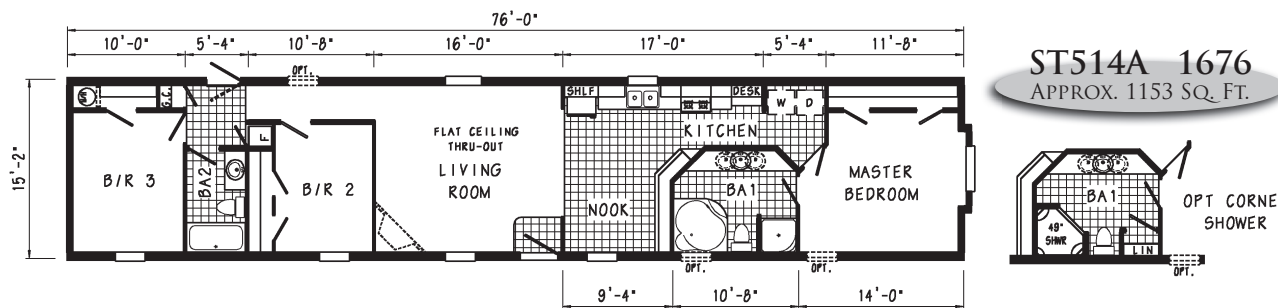
**JB516A 1476**  
APPROX. 1039 SQ. FT.



**JB539A 1476**  
APPROX. 1039 SQ. FT.



**ST514A 1676**  
APPROX. 1153 SQ. FT.



**ST530A 1676**  
APPROX. 1153 SQ. FT.

